

GENERAL NOTES:

WHEREVER POSSIBLE ACCESSIBLE ROOMS WILL BE LOCATED ON THE GROUND FLOOR OF LODGES.

HOT WATER MUST BE REGULATED TO ENSURE THAT TEMPERATURE DOES NOT GO ABOVE 43 DEGREES C.

A MINIMUM OF ONE ACCESSIBLE ROOM MUST BE PROVIDED FOR EVERY TWENTY ROOMS.

ALL DIMENSIONS ARE CLEAR DIMENSIONS (WALL TO WALL FINISH) DIMENSIONS SHOWN ARE FOR TYPICAL TIMBER FRAME OR METSEC CONSTRUCTIONS.

CONTRACTOR TO ALLOW FOR A SILICONE MASTIC SEALANT AT DESK/WALL AND BEDHEAD/WALL JOINTS, REFER TO FINISHES SCHEDULE FOR COLOURS

PODS TO ACCESSIBLE ROOMS ARE FLOORLESS, SLOPING FLOOR TO BE FORMED ON SITE. VINYL FLOOR FINISH BY CONTRACTOR.

DRAWING NOTES:

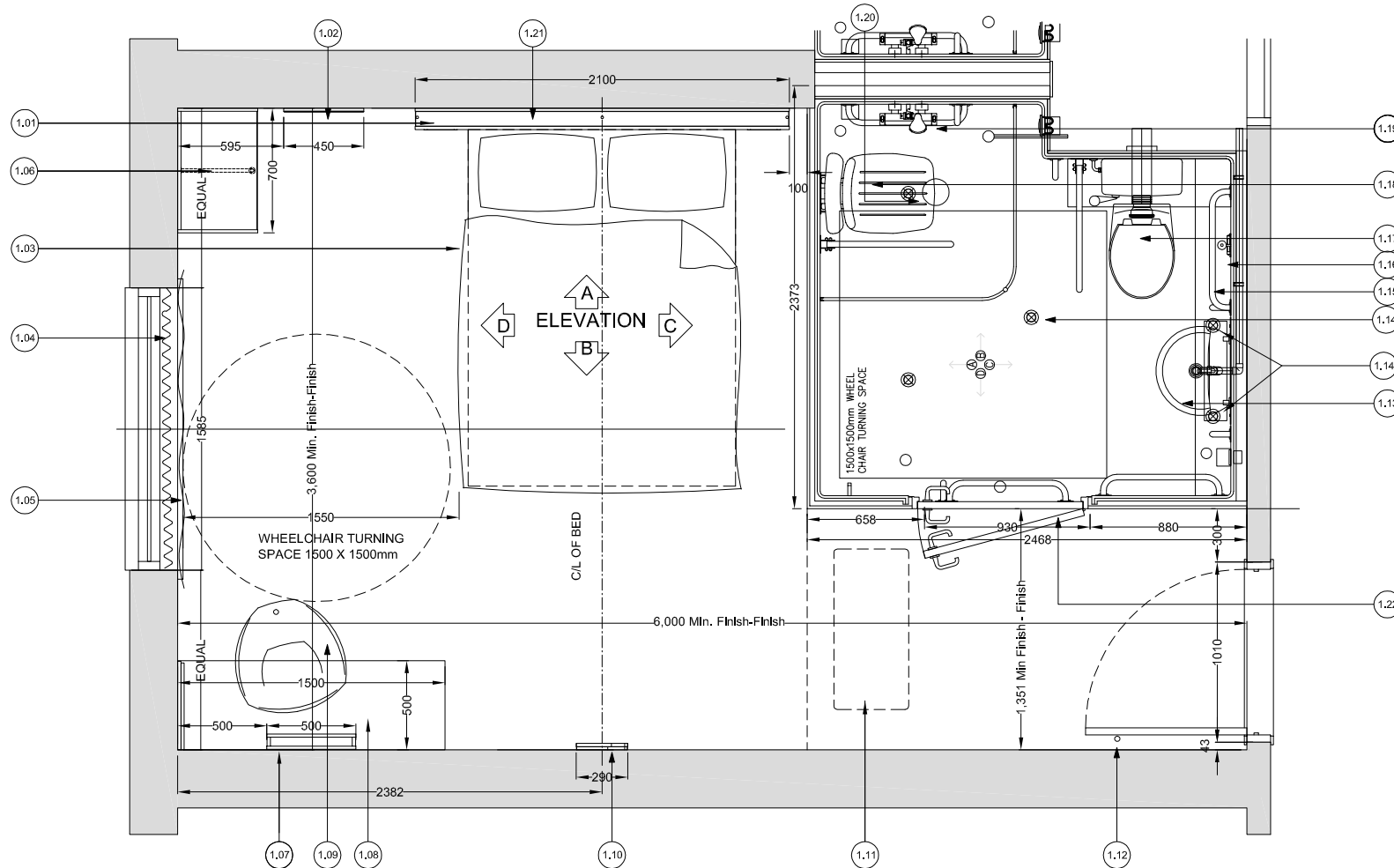
- (1.01) BEDHEAD, LIT FROM WITHIN WITH FLUORESCENT LIGHT FITTINGS.
- (1.02) MIRROR.
- (1.03) ZIP AND LINK BED.
- (1.04) SHEER CURTAIN (SITE SPECIFIC).
- (1.05) CONTRACTOR TO FIT TIMBER NOGGIN /PATTRESS OVER WINDOW TO ALLOW FIXING OF CURTAIN POLE
- (1.06) HANGING SPACE.
- (1.07) MIRROR WITH INTEGRAL WALL LIGHT ABOVE.
- (1.08) VENEERED DESK.
- (1.09) CHAIR.
- (1.10) WALL MOUNTED VENEERED PANEL WITH PRE-FITTED TELEVISION BRACKET.
- (1.11) COMFORT COOLING UNIT MOUNTED IN BULKHEAD
- (1.12) FLOOR MOUNTED DOOR STOP.
- (1.13) WASH HAND BASIN.
- (1.14) LED DOWNLIGHTS.
- (1.15) GRAB RAIL.
- (1.16) TOILET ROLL HOLDER.
- (1.17) WC WITH WALL MOUNTED CISTERN.
- (1.18) SHOWER SEAT.
- (1.19) SHOWER VALVE.
- (1.20) SHOWER GULLY TO BE "WADE K2307" 150mm DIA. S/STEEL GRILLE FOR VINYL FLOORING WITH "WADE G202" CAST IRON GULLY (SUBJECT TO SITE CONDITIONS)
- (1.21) PICTURE.
- (1.22) COVER STRIP AT THRESHOLD BY CONTRACTOR.



CONTENTS: ACCESSIBLE ROOM - SETTING OUT AND FIXTURES.

2015 EDITION

BD - 021 REV F



Please Note:
 This page is intended for visual reference only. Drawings are not to scale. All dimensions are in mm. All dimensions are to be checked on site prior to commencing work. Any discrepancy found between information given on this drawing and that given elsewhere or recorded on site shall be notified immediately to the Employers/Tenants agent in writing.