

**GENERAL NOTES:**

IN MULTI STOREY PROJECTS THE SERVICE DUCT DIMENSION MAY NEED TO INCREASE TO ACCOMMODATE LARGER PIPE DIMENSIONS. DUCT DIMENSIONS SHOULD BE DETERMINED AND AGREED WITH EMPLOYERS/ TENANTS AGENT.

ALL DIMENSIONS ARE CLEAR DIMENSIONS (WALL TO WALL FINISH) DIMENSIONS SHOWN ARE FOR TYPICAL TIMBER FRAME OR METSEC CONSTRUCTIONS.

CONTRACTOR TO ALLOW FOR SILICONE MASTIC SEALANT AT DESK/WALL JOINT AND BED/HEAD/WALL JOINT, REFER TO FINISHES SCHEDULE FOR COLOUR

**DRAWING NOTES:**

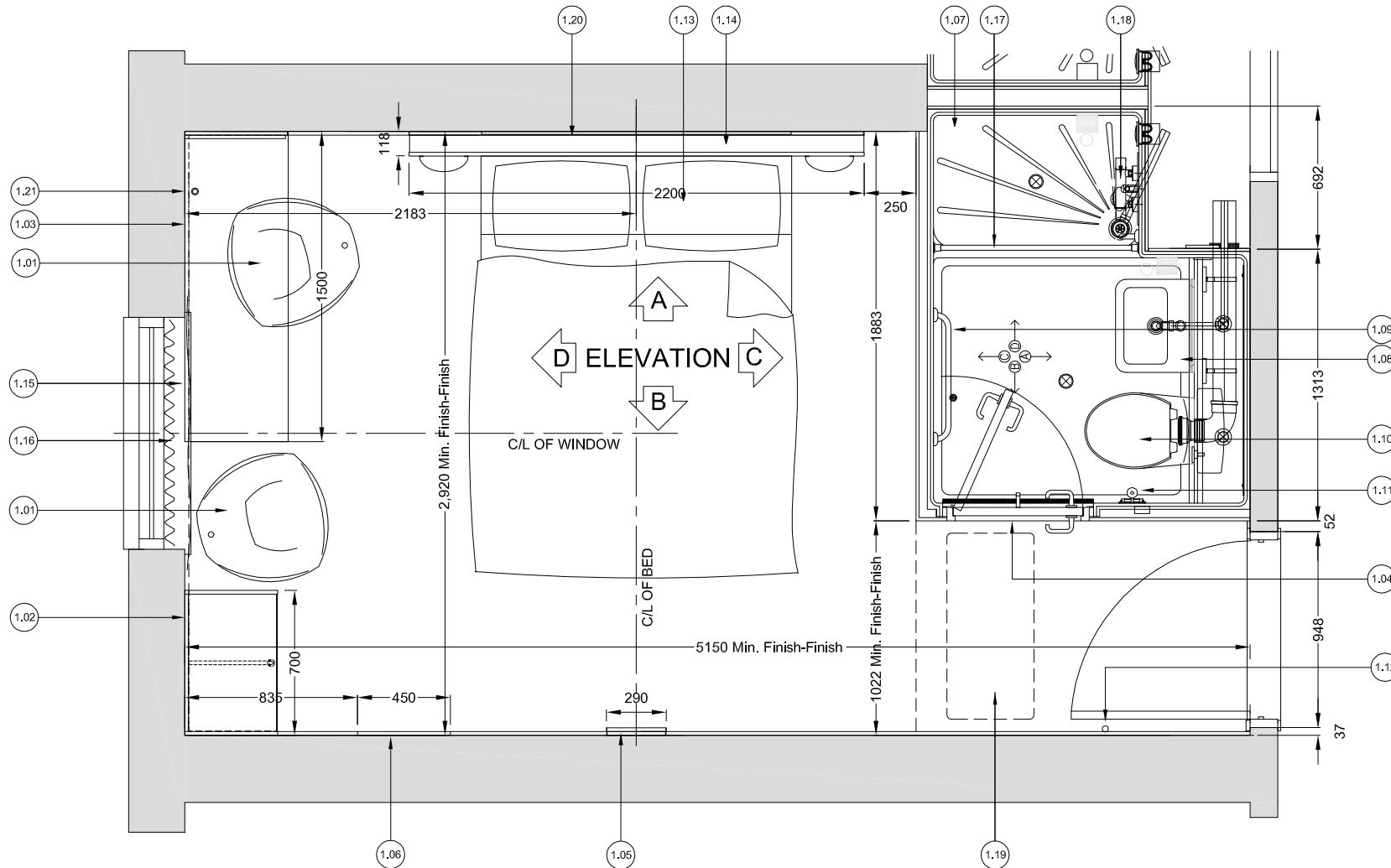
- |  |                                      |   |
|--|--------------------------------------|---|
| (1.01) CHAIRS.   | (1.08) WASH BASIN WITH MIRROR ABOVE. | (1.15) CONTRACTOR TO FIT TIMBER NOGGIN /PATRESS OVER WINDOW TO ALLOW FIXING OF CURTAIN POLE |
| (1.02) HANGING SPACE.  | (1.09) TOWEL RAIL.                   | (1.16) SHEER CURTAIN (SITE SPECIFIC).   |
| (1.03) VENEERED DESK.  | (1.10) WC.                           | (1.17) SHOWER CURTAIN AND RAIL.   |
| (1.04) COVER STRIP AT THRESHOLD BY CONTRACTOR.                         | (1.11) TOILET ROLL HOLDER.           | (1.18) SHOWER HEAD.   |
| (1.05) WALL MOUNTED VENEERED PANEL WITH PRE-FITTED TELEVISION BRACKET. | (1.12) FLOOR MOUNTED DOOR STOP.      | (1.19) COMFORT COOLING UNIT MOUNTED IN BULKHEAD   |
| (1.06) MIRROR.   | (1.13) BED.                          | (1.20) PICTURE.   |
| (1.07) SHOWER TRAY.  | (1.14) HEADBOARD                     | (1.21) CONTRACTOR TO FIT LOOSE SUPPLY GROMMET TO DESK FOR DESK LAMP                         |



CONTENTS: DOUBLE SHOWER ROOM - SETTING OUT AND FIXTURES

2015 EDITION

BD-011 REV F



**Please Note:**

This page is intended for visual reference only. Drawings are not to scale. All dimensions are in mm. All dimensions are to be checked on site prior to commencing work. Any discrepancy found between information given on this drawing and that given elsewhere or recorded on site shall be notified immediately to the Employers/Tenants agent in writing.